

# GOPDC *News*

The house journal of GOPDC  
Volume 23 - December 2012



## GOPDC Limited

GOPDC is an integrated agro-industrial company specialized in the cultivation of oil palm, extraction of crude palm oil and palm kernel oil. GOPDC also produces refined specialty oils for use by the food industry. GOPDC is also diversifier into the cultivation of rubber trees (*Hevea Brasiliensis*).

GOPDC is wholly owned by Société d'Investissement pour l'Agriculture Tropicale (sa Siat nv) of Belgium.

GOPDC has 21,000 hectares of oil palm plantations at Kwaie and Okumaning in the eastern region of Ghana, 14,000 of which have been developed for about 7,000 outgrowers. GOPDC's processing facilities comprise a 60 mt/hour fresh fruit bunch palm oil mill, a 60 mt/day palm kernel mill and a 100 mt/day refinery and fractionation plant.

GOPDC is strongly focused on creating value for its produce. This is the driving force behind all the investments taking place. An agro-industrial company such as GOPDC is part of the community and cannot survive without social engagements. We support the communities we operate in not only through the results from our business operations but also in several other ways. GOPDC invests in education, health and the environment because they are essential factors in social development with the aim of improving living standards for the majority of the people.

## Our Vision

Our vision is to ensure that our business will be conducted in a more prosperous, safe and environmentally sustainable manner that will promote the wellbeing of our shareholders, employees, customers, community and the environment.

## Editorial Committee

Philippe Hoogstoel  
Alhaj Bashir Manu  
Emmanuel K. Wiafe  
Augustine K. Owusu-Sarpong

## Contact Information

GOPDC Ltd  
Kwaie Estate, Kwaie near Kade  
Kwaebibirem District, Eastern Region, Ghana  
Tel.: +233 (0)54 43 34 893, (0)24 43 30 090 -  
Fax: +233 (0)30 32 02 670  
E-mail: [info.gopdc@siat-group.com](mailto:info.gopdc@siat-group.com)  
[www.gopdc-ltd.com](http://www.gopdc-ltd.com)

## Contents

Foreword .....	4
GOPDC gets new <b>Managing Director</b> ... ..	5
Departmental reports .....	7
<i>Corporate</i>	
• Siat in partnership with GMG Global Ltd .....	7
• Okyenhene in the Republic of Gabon .....	9
• Tribute from the Board ... ..	10
• Payment of Crop Compensation .....	11
• GOPDC School goes to Ghana Education Service .....	14
<i>Agriculture</i>	
Kwae Estate .....	12
Okumaning Estate .....	13
RSPO - Press Release .....	15
<i>Production</i>	
<b>Projects</b>	
Bio-methanisation plant .....	17
Palm Kernel Cake plant .....	18
Jerrycan Filling plant .....	18
New Boiler and Turbine .....	19
Storage Tanks .....	20
<b>Environmental, Safety and Health</b> .....	20
<b>Human Resource</b>	
• New Appointments .....	24
• Promotions .....	28
<b>Community and Social Responsibility</b>	
• GOPDC assists communities with over GH¢188,000 .....	30
• New projects in the communities .....	32
• GOPDC assists Kade Police .....	33
• Support for quality education .....	34
• Donation to Savelugu-Nanton District .....	34
<b>Our Working Environment and Social News</b>	
• Werner Pirijns leaves GOPDC .....	35
• GOPDC Health Walk 2012 .....	37
• H.E. Mr. Herman Van Rompuy's private visit to Ghana .....	38
• Health and Sanitation Education for GOPDC School .....	46
<b>Going Down Memory Lane!</b> .....	47
<b>Editor's Pick</b> .....	48

## Foreword



### Introduction:

Greetings from Kwae!

We are pleased to present Volume 23 of the **GOPDC News** (Gnews). In this issue, we will let the photos tell their own stories.

We trust you will enjoy the special photo-story of the private visit of His Excellency Mr. Herman Van Rompuy, President of the European Council. For those who will be interested in getting an in-depth view of this colourful and memorable visit, there is a three-volume photo album at the Office of the Managing Director for viewing.

On corporate matters, a release from Group head office on partnership between Siat and GMG Global Ltd is reproduced.

The Agriculture Report features the introduction of Rubber in our operations.

New projects - Bio Methanisation, Palm Kernel Cake Pellet Plant, Jerrycan Filling Plant, New Boiler & Turbine, new Storage Tanks - have been described under the Production Report.

We are very much aware of your expectations regarding our promise to bring you two new features - *The Gnews Family* and *The Gnews Community*. We deeply regret our inability to feature these in this edition due to space constraint. You will definitely have them in the next edition!

### *Editorial Committee*



## New Management



**MR. PHILIPPE HOOGSTOEL** assumed the position of Managing Director of GOPDC in March 2012. Mr. Hoogstoel replaces Mr. Werner Pirijns. Mr. Hoogstoel holds MSc in Mining Engineering (1988) and MSc in Information and Management Engineering (2000).

Before joining GOPDC, Mr. Hoogstoel was the COO of Siat Nigeria Limited (SNL) also a subsidiary of the Siat Group of which GOPDC is a member. Between 2006 and 2011 when he joined the Siat Group, Mr. Hoogstoel was the Technical Director of Emenite Ltd (member of Etex Group S.A.) in Emene, Enugu, Nigeria specialized in the manufacturing of roofing and ceiling sheets in fiber-cement. Previously, he held several management positions in Ceramic Industry in Europe.

### Also ...

**MR. FELIX O. NWABUKO** FCA ACIT MBA, current **Chief Financial Officer** who joined GOPDC in 2011. Mr. Nwabuko is a versatile Chartered Accountant and Consultant with extensive multi-industry, international, business transformation and project management experience. He holds MBA degrees of Manchester Business School, United Kingdom and University of Benin, Nigeria respectively.



Felix brings with him to GOPDC ten years of professional practice experience at KPMG, fourteen years experience in the strategic and operational management of large scale industrial oil palm plantation and processing enterprises as a key member of multi-disciplinary expert management teams of the two leading enterprises in the Nigerian oil palm and vegetable oil industry and seven years of project finance management in the United Kingdom. He fulfilled the roles of Finance Controller of Okomu Oil Palm Company Plc and Finance Controller and subsequently Director of Finance & Corporate Affairs of Presco Plc. In both roles he, as the chief financial officer, managed/coordinated the public flotation for Stock Exchange listings in Nigeria of the two companies at different times.

He has special interests in strategy, leadership and governance. He is married with children.

### ... MARKETING & LOGISTICS MANAGER



**MR. JALAJ ARORA** has been with GOPDC since February, 2011. He has over 14 years of experience with the West African Palm Oil market and Soaps & Detergent segment as a Senior Manager responsible for Strategy Planning, Liaising & PR, Business Development, Sales and Marketing, Product Promotion and Key Account Management.

His experience totals over 32 years in the commercial operations in over 2 continents. He has worked with many multinational companies like P&G and Godrej in India, and with leading FMCG companies like RIVOC Ltd and Orange Drugs Ltd in Nigeria. He presently looks after all Sales and Marketing Operations for SIAT Group in West Africa as the Marketing & Logistics Manager with GOPDC Ghana, and as Head-Sales & Marketing with PRESCO PLC in Nigeria

Jalaj is married with one Son.

## New Management

### ... HUMAN RESOURCE MANAGER



**MR. ERASMUS KWADWO TWENTOR.** BA (Hons), MPA, (University of Ghana) Legon; PGD (OD), University of Cape Coast. Has been in Human Resource practice for over a decade and Organisation Development since 2009.

Prior to joining GOPDC, Erasmus was a teacher and later an Electoral Administrator, having served as the District Electoral Officer for the then Nkwanta District of the Volta Region of Ghana. Was the Operations Manager for Voltic (Ghana) Ltd where he led the special Committee for Credit Control, Administration and Human Resources. Later joined Ghana Aluminium Product Ltd as Personnel and Administrative Manager. Was also with Ghana Agro-Food Company Ltd, Tema, first as the Human Resource Manager and Later as General Manager (Administration).

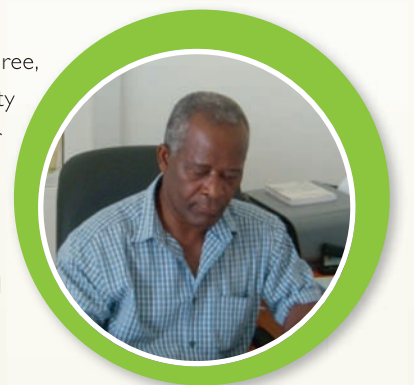
Has special interest in Labour, Organisation Development and Peoples issues. Erasmus is a Christian by faith.

### and PROJECTS & UTILITIES MANAGER,

**MR. HAMILTON AMACHREE.** Our new Projects and Utilities Manager, Hamilton Amachree, holds a BSc (Eng) honors degree in Mechanical Engineering from Imperial College, University of London. He joins GOPDC from his base in London, England, where he has been a lecturer in Engineering (Heat Transfer and Thermodynamics) at a Sixth Form College in East London.

Although he is the newest arrival in GOPDC, he hastens to point out that he is not entirely new to the SIAT family, having served as Mill Manager at Risonpalm, Ubima and then as Mill and Refinery Manager at Presco, near Benin.

Now, in the process of settling down, after completing the extended induction programme drawn up by Human Resources, Hamilton is looking forward to passing on the baton of 'the new kid on the block' to the new Security Manager when he arrives in December 2012.



### • • • CORPORATE

#### Siat in partnership with GMG Global Ltd (GMG)

We are pleased to reproduce below a release by our Group Corporate Office in Brussels as featured at the website of Siat Group.

#### NEWS

Siat entered into a partnership with the Singaporean based GMG Global Ltd (GMG)  
27 juli 2012:

Dear All,

As you probably know, on February 21st, 2012, Siat entered into a partnership with the Singaporean based GMG Global Ltd (GMG), a subsidiary of Sinochem International from China. Last week, on the 17th of July, GMG acquired a 35% stake in the Siat holding company, in Belgium. To celebrate this event we organized an official ceremony in Brussels. You can view the pictures of this joyous event via the following link: [www.alohafred.com/Siat](http://www.alohafred.com/Siat)



This minority share investment in Siat by a Chinese partner is a very strong vote of confidence in the management skills of SIAT in the field of tropical agro-industrial concerns. It is the first time, in its 63 years of history, that the Sinochem Group takes a non-controlling stake in a company, thereby recognizing the very high level of expertise of the Siat management and employees.

This partnership brings two major positive changes for Siat:

GMG and Sinochem are major players in the Asian and Chinese natural rubber market. GMG will act as marketing agent for the Siat Group rubber products, and open the doors to the Chinese market.

Through the fresh capital injection, Siat has the means to consolidate its existing position in Africa, and accelerate its growth plans in other countries, such as Cambodia, Indonesia and others.

This partnership will boost the development of Siat, for the benefit of all its valued stakeholders, uniting 2 cultures, the experience, qualities and people of three continents, opening a vast range of new possibilities for the both of us on the road to success in Europe, Africa, Asia and far beyond.

Siat's new strategic partner fully shares the Group vision. A joint "Strategic Investment Committee" is put in place to allow both companies to capitalize on each other's skills and resources and maximize growth, whilst Siat keeps its full independence for the day-to-day operational management.

Helena Vandebeeck  
**Managing Director**



## DEPARTMENTAL REPORTS

Before the close of the partnership deal and as part of GMG's due diligence, GMG visited GOPDC in August 2011. Here is the photo story of the visit ...

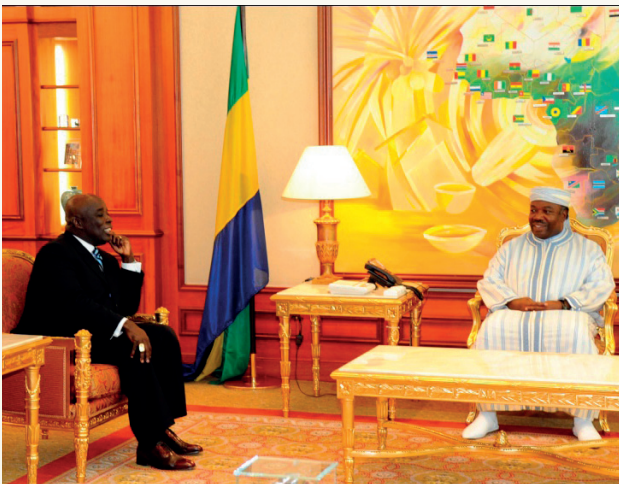




## DEPARTMENTAL REPORTS

### Okyenhene in the Republic of Gabon

At the invitation of Gabonese President H.E. Ali Bongo Ondimba, Osagyefuo Amoatia Ofori Panin, Okyenhene, visited the Republic of Gabon on the occasion of the 51<sup>st</sup> Independence Anniversary celebration of the Republic of Gabon. The visit was facilitated by GOPDC and Siat Group Chairman Pierre Vandebecq. This is the photo story ...



... also below is the visit of the Okyenhene as featured in one of the newspapers of Gabon ...



## DEPARTMENTAL REPORTS

### TRIBUTE FROM THE BOARD, MANAGEMENT & STAFF OF GHANA OIL PALM DEVELOPMENT COMPANY LIMITED



**MRS CECILIA NYANN** joined the Board of Directors of Ghana Oil Palm Development Company Limited (GOPDC) in March 2009. She had earlier had professional dealings with GOPDC in her capacity as an External Auditor with Deloitte.

Her engagement on the Board although short was very beneficial to GOPDC.

As the immediate Past President of the Institute of Chartered Accountants of Ghana and her earlier experience with the company as an external Auditor she appreciated the challenges of GOPDC and thus made very useful contributions at Board meetings. She always assisted the Board with effective leadership as well as ensuring the continued effectiveness of the management team and high standard of financial probity and corporate governance.

It was no wonder that she assumed the Chair of the Audit subcommittee of GOPDC Board of Directors.

We are all saddened by her loss. In fact she chaired her last meeting on the 11<sup>th</sup> of August 2011 which stood adjourned till 17<sup>th</sup> August 2011. In her usual meticulous approach and style she called to make known her unavailability for the meeting insisting the meeting went on without her.

We convinced her that the meeting would stand adjourned until she was available to chair same; regrettably this was not to be. The late Mrs. Cecilia Nyann was forthright in her deliberations at GOPDC Board Meetings.

GOPDC and the Board shall greatly miss her support, concern and contributions to designing policy framework for GOPDC.

The Board, Management and staff of GOPDC extend their sincere condolences to her daughter and entire family on the occasion of this great loss to all.

MAY HER SOUL REST IN PERFECT PEACE.

Patrick D. ANIN Esq.  
SECRETARY TO THE BOARD  
September 2011



## DEPARTMENTAL REPORTS

### PAYMENT OF CROP COMPENSATION



Payment of compensation to the Okumaning “Congo” community farmers whose lands and crops were valued in 2005 and 2010 began on 7<sup>th</sup> May, 2012 at the Okumaning Estate office.

The Chiefs of Kusi, Okumaning, Takrowase, two Valuation Officers from Koforidua and five GOPDC Officials were present to ensure smooth payment of the compensation. Though the payment at the Okumaning site was completed on 10<sup>th</sup> May, 2012 the few who could not make it to Okumaning would later be paid at the GOPDC head office



on Kwae Estate.

A total of 484 people were to be compensated for their buildings with a total value of GH¢1,075,888.03 while a total of 596 farmers were to benefit from crop compensation of GH¢1,823,985.96.

A grand total of 1,080 persons were to benefit from a grand total sum of GH¢2,899,873.99 for both buildings and crops. Out of this number, about 98% of farmers have been duly compensated.

### Challenges

After the payment a number of the claimants submitted petitions ranging from “inadequate compensation” to “non-payment”. Regrettably, while the Company was examining the petitions and making every effort to resolving the complaints, the claimants decided to take the matter to court. However, GOPDC wishes to assure the claimants and the entire community that the Company is still open to finding an amicable solution to the concerns raised by the claimants.



## DEPARTMENTAL REPORTS

### ••• AGRICULTURE

#### Kwae Estate

About 1,000 ha of old planting succumb to tree-poisoning at Kwae to make way for new planting. The photo story ...



... and the new ones grow to ensure the lineage is not cut!





## DEPARTMENTAL REPORTS

### The Rubber Project



***Tuesday, June 5, 2012 marked the beginning of Rubber at GOPDC ...***

Managing Director, Mr. Philippe Hoogstoel, plants the first tree to commence the Rubber Project ...

... and now here they grow!



... under the continued care of the Rubber Team ...



## DEPARTMENTAL REPORTS

### Rubber Diversification

At a meeting on November 28, 2012 with executives of the Farmers' Association, the Chairman of the GOPDC Board Mr. Pierre Vandebecck engaged the farmers in a special session on Rubber. Below are excerpts of the discussions on the rubber project.



Chairman Vandebecck informed the farmers that the rubber project had started and that planting material was ready. The Chairman said currently there were about 250,000 seedlings available, enough for about 500 hectares planting. He said, as a condition, these planting materials would go to loyal farmers. Mr. Vandebecck reassured the farmers that the offer to visit Côte d'Ivoire was still open.

For comparison purposes, the Chairman provided a simple analysis of the economic value of Rubber against Cocoa, Citrus, Oil Palm as follows:

Crop	Average yield per hectare	Present Value per tonne (GH¢)	Present Revenue per hectare (GH¢)
Cocoa	0.5 t/ha	3,500	1,750
Citrus	25 t/ha	100	2,500
Oil Palm	15 t (FFB)/ha	175	2,650
Rubber	3 t (cup-lumps)/ha	2,000	6,000

Crop	Specificities;
Cocoa	Seasonal, disease prone, chemical inputs
Citrus	Marketing problems in peak season, disease prone, chemical inputs
Oil Palm	Partly seasonal, fertilizers are expensive
Rubber	Very little fertilizers, no chemicals, no diseases, production throughout year, forestry base, environmentally friendly, can be easily stored without any loss, grows everywhere except in low lands and therefore is not in competition with oil palm.

From the analysis, the Chairman said rubber was more profitable and advised the farmers to go into rubber. However he noted that the maturity period for rubber was 6 years. Mr. Vandebecck said the financial return per ha yield was much higher. The Chairman further noted that rubber grows very well on uplands. He, therefore, advised the farmers to consider dedicating their uplands to rubber while the lowlands go for oil palm which performs well in lowlands because the market with GOPDC is always secured.

In response to a question raised by Mr. Affum Donkor as to whether there were any known diseases of rubber, Mr. Vandebecck said when planted in a new area after forest, rubber might have a root disease. However, in areas previously planted (e.g. with citrus or oil palm) rubber would be void of disease. Mr. Vandebecck said generally speaking, rodents would not attack rubber.

The farmers also wanted to know how soon a rubber factory would be set up. The Chairman said a rubber factory would be operational in about five years from now and thereby assured the farmers that market for the rubber was guaranteed.

Mr. Twumasi-Ankrah said since there would be zero-diversion in rubber, the company could consider granting some incentives to interested farmers at the initial stage of the project. In response, Mr. Vandebecck said the company would undertake in-depth communication and education on the rubber project in due course. However, he assured the farmers that GOPDC would provide the best planting material. He noted that for now, the planting materials would be grafted but in future there would be a different sort of material (e.g. clones). Mr. Vandebecck said the company would organize training for planting and upkeep of immature plantations and later set up tapping schools as part of the company's extension services.

## DEPARTMENTAL REPORTS

### Collection Centres re-opened!

#### **“Fa abɛ bɛgye sika!”**

GOPDC is pleased to announce the reopening of its Collection Centres. According to GOPDC Chief Agriculture Office Mr. Christian Amoh Otu, operations at 20 centres will resume operations in January 2013 with maybe others to follow.

The initial 20 centres to start in January 2013 are: Afosu, Praso Kuma, Dodoworaso, Nkwateng, Chia, Brenase, Akokoaso, Boso Villa, Adwafo, Kwaɛ Adiembra, Abenaso, Asuom Gate, Abaam, Tweapease, Amanfrom, Akawani, Larbikrom, Akoase, Mpere, Anweam 82.

### RSPO

March 2011 - Ghanaian National Interpretation of the RSPO Principles & Criteria was accepted by the RSPO Board.

Since then GOPDC, West African Fair Fruit (WAFF) and Solidaridad (International NGO) were establishing a project in respect to the Outgrowers and Smallholders in the catchment area of GOPDC. In September the posters for the project were developed, and the GOPDC Extension officer team was formed and trained by Dr. Budu (Kade Research Center) and WAFF for the trainings. The first training was held on the 11.11.2011 in Chia with 25 farmers. Since then 2 trainings are scheduled per week in various communities. The project is focusing in the first year on 500 farmers, and will increase the number of farmers trained in the following 2 years up to 5000 (if so many farmers are interested).

### NEWS RELEASE

#### **GHANA CREATES HISTORY FOR AFRICA**

##### *RSPO approves National Interpretation of the Principles and Criteria for sustainable palm oil in Ghana*

Kuala Lumpur, March 2, 2011 - The RSPO (Roundtable on Sustainable Palm Oil) is pleased to announce that a National Interpretation (NI) of the RSPO Principles and Criteria for sustainable palm oil has been approved in Ghana, the first country in Africa to receive this endorsement.

The NI paves the way for RSPO certification of oil palm growers in Ghana, setting out clear indicators for the development of sustainable palm oil appropriate to the local context.

Darrel Webber, the Secretary General of the RSPO Secretariat based in Kuala Lumpur commented that: “This leap towards promoting sustainable palm oil in Ghana is a landmark achievement for Africa, the new frontier for sustainable palm oil, blazing the trail for other countries within this continent to emulate.

“This signifies a historical milestone for Africa, in particular West Africa, the very origin of oil palm (*elaeis guineensis*), which we hope will catapult the continent onto the sustainable pathway for the benefit of People, Plant and Prosperity.

“It is indeed inspiring to see people and nations coming together to play an instrumental role in shaping change for a sustainable future. The RSPO congratulates the NI Working Group and encourages all oil palm growers in Ghana and eventually, others within the African continent to seek certification.” Webber concluded.

## DEPARTMENTAL REPORTS



Central to the philosophy of RSPO as a multi stakeholder organization, is that the NI is developed as a result of intense research, dialogue, feedback and collaboration within a Working Group comprising key constituents in markets involved; which usually includes representatives from each stakeholder group in the palm oil supply chain; local communities; regulatory and governmental bodies; and NGOs.

The Ghana National Interpretation Working Group (GNIWG) comprised experts from various areas of Agronomy, Milling and Research; Environment and Natural Resources; Legal License and Social; and Economics and Labour; in order to embody diverse perspectives.

Gert Vandersmissen, Chairman of GNIWG further commented that: "In the beginning, we faced some challenges in getting the various stakeholders together but as soon as all parties realized the significance of this initiative, we had support beyond expectations. We are thrilled about the first Ghanaian Certified Palm Oil and what the future holds for sustainable palm oil in Africa."

### About RSPO

The Roundtable on Sustainable Palm Oil (RSPO) was established in 2004 with the objective promoting the growth and use of sustainable oil palm products through credible global standards and engagement of stakeholders. The Secretariat is based in Kuala Lumpur with a satellite office in Jakarta.

RSPO is a not-for-profit association that unites stakeholders from seven sectors of the palm oil industry - oil palm producers, palm oil processors or traders, consumer goods manufacturers, retailers, banks and investors, environmental or nature conservation NGOs and social or developmental NGOs - to develop and implement global standards for sustainable palm oil. For further information, please refer to our website: [www.rspo.org](http://www.rspo.org)

-- End --

### For further information, please contact:

Anne Gabriel  
Communications Director  
RSPO Secretariat  
[AnneGabriel@rspo.org](mailto:AnneGabriel@rspo.org)



### Projects:

#### I. BIO METHANISATION PLANT

(Manufacturer -Biotech)

Many Palm Oil Mills face energy insecurity due to fossil fuel scarcity. This challenge has propelled the importance of biogas as a renewable energy source. Palm oil mill is one of the most important agro-industry. The processes of this industry release large amount of organic pollutant wastewater. This effluent is generated through the sterilization of fresh oil palm fruit bunches, clarification of palm oil and from hydro-cyclone operations. This discharge if not treated properly will damage environment both in receiving water quality and foul smell in the neighborhood.

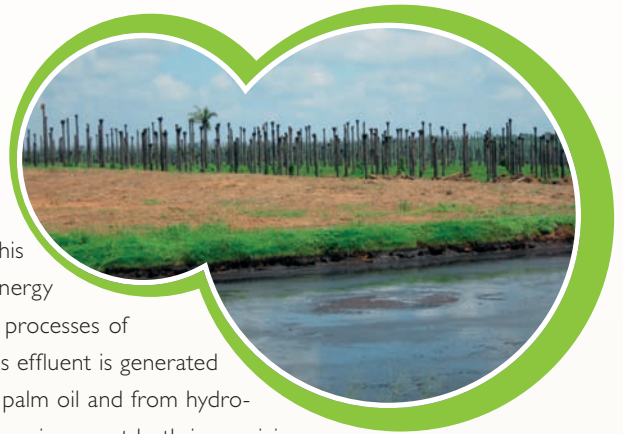
- It is in this regard that GOPDC Ltd has opted for a proper wastewater treatment which will in turn be very beneficial to its processes. This efficient treatment system is the closed anaerobic digester tank that has become popular at present. In addition, this treatment has the following advantages:
- High biogas yield (30% higher than conventional covered lagoon)
- Low biomass yield
- High volumetric organic load and short retention time requiring small plant footprint (<20% of conventional covered lagoon)
- Modular and compact system
- Quick construction
- No odor emissions

This biogas (methane) can be further utilized as fuel for the production of electricity. The refinery will utilize this biogas as fuel for the boilers, which are now run on diesel. The biogas will also enable the refinery to be nearly independent from the utilities' steam supply, as the biogas will cover 100% of the high Pressure Boiler's diesel consumption as well as supply 80% of steam demand as utilities supplies 20%.

Due to energy demands and environmental concerns being important issues nowadays, GOPDC Ltd has started this project to produce energy from biomass (biogas) from anaerobic digestion. Furthermore, palm oil mills could earn some revenue by the utilization of methane gas as a renewable energy from the anaerobic digestion of palm oil mill effluent. This system does not only produce biogas but also reduces water pollutants.

#### Materials and methods

The bio-digester has an effective volume 13,500 m<sup>3</sup> and lined at the bottom with a HDPE-geo membrane. It has an agitator and sludge purging systems for proper internal mixing and sludge removal. The system will provide a good contact between microbes and substrates, reduces resistance to mass transfer, minimizes buildup of inhibitory intermediates and stabilizes environmental conditions. Palm oil mill effluent will be pre-treated in an oil recovery tank and primary ponds before being fed to the anaerobic digester. Seed inoculums will be fed into the digester from the anaerobic ponds. The main purpose of pre-treatment is to reduce the temperature of wastewater.



## PRODUCTION

### 2. PALM KERNEL CAKE PELLET PLANT

The Palm Kernel Cake (PKC) pellet plant is another major on-going project. Construction work of this project is finished. This plant is for the production of animal feed.

The palm kernel cake from the crushing is the raw material for this plant. This is a good raw material because it has a very high protein content needed for healthy growth of livestock.

#### Operation

The input (PKC) is sieved into a silo. This is to allow only fine cake and get rid of shells in the cake. Presence of shells in the cake will result in poor binding of the cake. After sieving, the cake is mixed with fat. This fat serves as a binding aid.

The fat used as binding aid here is the PFAD (Palm Fatty Acid Distillate) which is the by-product from the refining process of the Crude Palm Oil at the refinery. The fat plays certain roles in the feed.

- Addition of fat produces a palatable product
- Fat is a concentrated source of energy and some specific nutrients
- Fat reduces dust levels and waste during handling of feed
- The pellets are easily produced with addition of fat.

Apart from the fact that PFAD is a by-product of the industrial activities of GOPDC, it is presently the most cost-effective and reliable feed fat used as binding aid. It is also consistent in quality and composition. It is a good source of essential fatty acids. It is less prone to rancidity because of insignificant level of linolenic acid. It also has a low level of stearic acid, which is poorly digested by poultry. It has a high level of Vitamin E, an anti-oxidant and a high level of fatty acids usually above 80% which is a benefit in energy value in ruminants.

- After mixing the cake and PFAD, a slurry is formed. It is worth noting that the quantity of fat needed as binding aid is dependent on the quality of PKC. The slurry is then pressed into pellets of specific length and diameter. The pellets are then dried (cooled), stored and bagged.

The target capacity of the plant is 2000kg/hr with bagging capacity of 40 bags of 50kg/hr. the diameter of the pellet is expected to be 5-6mm. the temperature of pellets after drying (cooling) is 5°C above ambient temperature with moisture content of 12-14%. PDI before bagging (this means the percentage of pellet in product flow after cooling) is expected to be 85-90%.



### 3. JERRYCAN FILLING PLANT

GOPDC Ltd in the past has sold all its products (CPO, PKO, RBDO, PFAD, Olein and Stearin) in bulk. Olein which is the largest vegetable cooking oil for both domestic and industrial use is the main valuable product of the fractionation unit of the industry. This Olein is sold to customers in tankers and ISO-containers. The customers then offload the oil into their storage tanks before refilling into smaller units and branded for the consumer.

In GOPDC Ltd, quality is at the forefront of our processes. Quality is what dictates every activity performed. Our commitment to quality and safety is resolute. It is in this regard the company is employing modern techniques and regular quality assurance and control to ensure that customers and consumers get full satisfaction for their money.

In view of this, the company has taken a step further and has started putting up a jerrycan filling plant. The aim of this plant is to eliminate any form of contamination that may occur from the time the product leaves the company's premises to when it gets to the final consumer. The Olein will be packaged in jerrycans for the customer. In this way, safety and quality of the product is assured until it reaches the consumer since contamination that may occur during offloading and re-packaging by the customer is avoided. The GOPDC Olein will have a brand name.

Apart from the safety and quality issues, this project will create employment opportunities which will contribute to the socio-economic development of the area.

#### 4. NEW BOILER AND TURBINE

The use of electricity and steam is so essential in the running of the technical department. A steam boiler to produce steam for electricity generation as well as steam for various processes in this section is therefore an important asset for any Palm Oil Mill industry.

Currently, GOPDC Ltd has a 30MT/hr capacity boiler from Vyncke that supplies saturated steam for the various processes at the mill and refinery as well as superheated steam for the 2.5MW steam turbine to generate electricity.

Since GOPDC Ltd presently depends on only one boiler, the challenge is that anytime the boiler is down, steam supply to the mill and refinery is cut off which invariably causes the Mill to be stopped whether there is FFB to be processed or not. Another challenge is that anytime the boiler is down, superheated steam supply to the turbine is cut off which in turn stops electricity being generated.

To deal with the above challenges, GOPDC Ltd is installing a new 30MT/hr capacity boiler by Vickers. It will have an operating pressure of 25bar (gauge) and a superheated steam temperature of 260°C. This boiler will also use biomass from the palm oil mill process as fuel to generate steam. Its water supply will be demineralized water from the water treatment plant. This new boiler will be used anytime the Vyncke boiler is down to:

- Supply superheated steam to the turbine to generate electricity at 260°C and a pressure of 25 bar
- Supply saturated steam to the mill and the refinery in order to aid their operations

This will reduce loss of production hours due to unavailability of steam, which is experienced presently when the Vyncke boiler has a fault.

Due to the unreliable and expensive nature of ECG on the estate of GOPDC, the company generates between 60-80%, a larger proportion of its electrical energy and supplement it with electricity from ECG and a 1600kVA gen-set.

GOPDC produces its electricity through the use of a 2.5MW steam turbine which is able to run on both condensing and extraction modes. Since that is the only turbine that GOPDC presently has, the electrical loads will have to be transferred to ECG or Gen-set anytime the turbine is down. This is quite expensive.

## PRODUCTION



*The construction works for new boiler and turbine have been started.*

To deal with this, GOPDC is in the process of installing a new 1.5MW back pressure steam turbine by **Turbo Kraft** that will supply electricity to the factory anytime the 2.5MW steam turbine is down.



### 5. STORAGE TANKS



GOPDC Ltd has erected two new storage tanks for CPO with capacities of 2105.36m<sup>3</sup> and 2105.17m<sup>3</sup>. This project became necessary to be able to store large quantities of CPO especially during the peak season. The tanks have been calibrated and ready for use.

## ENVIRONMENT, HEALTH AND SAFETY

### **Environment**

It was agreed by Siat Management to install biomethanisation plants at GOPDC, Presco and Siat Gabon. For GOPDC, work will commence end of 2012. With this biomethanisation plant GOPDC will finally be able to meet the effluent requirements set by the Environmental Protection Agency (EPA). Please see the Production departmental report above for a description of the biomethanisation project.

### **Safety & Health**

- Training in Fire Safety in February and December 2012 facilitated by the Ghana National Fire Service for a cross section of GOPDC workers.
- Training on Food Hygiene and effective cleaning application for the food industry (August 2012) for Mill and Refinery personnel.



## ENVIRONMENT, HEALTH AND SAFETY



- Training on Food Recall and Traceability (August 2012) for Refinery personnel.
- HACCP Training - The principles of Hazard Analysis and Critical Control Points, August 2011; with the help of the training the HACCP certificate was renewed and is now valid until 2014.



### SOME SAFETY IMPROVEMENTS AT THE FACTORY ...

**Protection of moving parts** ... Safety guards have been provided for moving machine parts at the factory.



Before



After

**Safety guards around pits** ... Open pits now have guards installed around them.



## ENVIRONMENT, HEALTH AND SAFETY

**Retention wall around oil tanks ...**



*Before*



*After*

**Road to Water Treatment Plant now in concrete ...**



*Before*



*After*

**Concrete in front genset shed ...**





## ENVIRONMENT, HEALTH AND SAFETY

*Empty bunch collection zone ...*



*Ghana Standards Authority also undertook a familiarization tour of the factory with journalists in 2012 ...*



**Palm Olein** is the liquid fraction obtained by fractionation of palm oil which is derived from the fleshy mesocarp of the fruit of the oil palm (*Elaeis guineensis*). **Palm Olein** distributed by GOPDC is fortified with vitamin A and vitamin D in proportions described in product specifications.



## HUMAN RESOURCE

### New appointments



**Bismark Asiedu** is a Ghanaian and a product of SPATS (St Paul's Technical School Kukurantumi). I hold an HND in Electrical Engineering from Cape Coast Polytechnic and had my National Service at Ada Technical Institute. I joined GOPDC's Technical Department as an Electrical Technician in July 2011. My hobbies are watching football and playing table tennis.

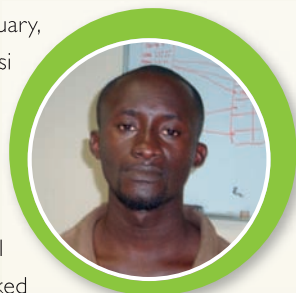
**Wisdom Zakli** joined the Technical Services Department of GOPDC Ltd on 2<sup>nd</sup> October, 2008 as a Machinist (Maintenance Engineering). I hold a Mechanical Engineering Technicians Part (I) from St. Paul Technical School, Kukurantumi. I also hold National Vocational Training Institute Certificate (I) and (2) from the Kokomlemle Toyota Workshop at Accra. I previously worked with Ghana Consolidated Diamond Limited (GCD) Akwatia as a shift Mechanic / Machinist with eight (8) years working experience. Those of you who care to know my status in marriage; well I'm married and blessed with two beautiful girls and one handsome boy, Theresa, Linda and Savior Warlanyo.



Hi,

**Mary Birago Bonsu** is my name. I'm at the Finance Department, General Ledger Section to be precise. Thank you.

**Godfred Oppong** joined the Technical Services Department of GOPDC on the 16<sup>th</sup> of February, 2008 as an Industrial Mechanic as an Industrial Attachment Student and later went to Kumasi Technical Institute to further my education. I hold Mechanical Technician Part I from Kumasi Polytechnic, 2009 to 2010 academic year. After the technician program, I came back to seek for job and I had GOPDC again. I was granted a year's contract and after the one year, I was made permanent on 1<sup>st</sup> of July, 2011 till date. I became senior house prefect from level two to level four at Kumasi Technical Institute due to my dedication and hard work as a student during that time. I was one of the best students in the mechanical department from level one to level four. I also worked at Akwatia GCD as Lathe Machinists and drilling, milling, shaping, grinding, welding and plant maintenance etc as industrial attachment. I like analyzing problems and finding plausible solutions to them.



**Ntow Samuel Okyere** joined GOPDC's Agric Department on 1<sup>st</sup> September, 2011 as a Nursery Supervisor. He completed his second cycle education at St Peter's Secondary School in the Eastern Region and now holds BSc (Hons) Degree in Agriculture from KNUST. He had his national service with GOPDC and was offered employment after service. He is single. His hobbies are playing keyboard, watching documentaries and reading.

## HUMAN RESOURCE



**Emmanuel Venice Dzidonu Doe** is my name. I joined the technical department of Ghana Oil Palm Development Company Limited (GOPDC Ltd) as a Laboratory Technician in the quality control division in 2011 till present. I hold certificate in science laboratory technician (SLT) from Accra Polytechnic. I had my practical experiences in Adabraka Polyclinic and Battror Mission Hospital. Football, reading, making friends, watching movies and swimming are my hobbies.

My name is **Amoabeng Kwame Peter**. I hold a certificate in Mechanical Engineering Part II from St. Paul Technical School Kukurantumi. I joined GOPDC Ltd 2004 up to date and it's been very lovely working with them and a nice working experience. I am single and still searching. Listening to music, watching movies and hanging around with friends are my hobbies.



**Elijah Tarimpulada** is my name, I'm from Tongo- Bolga in Upper East Region, I hold Advance Diploma in Mechanical Engineering ( City & Guilds of London Institute) from Mastech Advance Technology Institute in greater Accra. After the course, I had my attachment training with Cocoa Processing Company and Joined GOPDC Ltd August, 2008 as a Maintenance Technician at Technical Department Service. I love reading, jogging and socializing. Elijah is seriously engaged.

My name is **John Tetteh** born at Somanya in the Eastern Region and I completed Emit Electronic Institute Accra. I continued in computer networking and hardware. I joined GOPDC limited as a Boiler attendant in the year 2007 March 8<sup>th</sup> after four months I became a Water Treatment Operator.



**Allan Guy Aidoo** is a young man born in the mid eighties so you can guess his age. He holds a Higher National Diploma (HND) in Mechanical Engineering from Accra Polytechnic. He hails from Winneba but had his basic education at Kade L/A from then he attended Nsaba Secondary School and Studied Science. He joined the GOPDC Ltd Fraternity in January 2010 as a Boiler Operator Trainee. He is single, likes Banku with Fried Fish and Pepper. At his leisure time he likes to go out with friends. He is a Liverpool fan and a Fabulous fan as well.

My name is **Charles Acquah Danso**. I am a graduate of Kwame Nkrumah University of Science and Technology ( KNUST) I hold a BSc (Hons) degree in Agriculture from the afore mentioned University. I joined the Agricultural Services Department of GOPDC Ltd as a Research and Development Supervisor in September 1, 2011 after having successfully completed my National Service with the company. I'm interested in IT and reading about great minds. My favourite football club is the Reds ( Manchester United) -the Giants of Antiquity.



## HUMAN RESOURCE



I am **Irene Serwaa Amakye**. I am a proud product of Asamankese Secondary School (ASASCO). I hold a DBS( Diploma in Business Studies) Accountancy option from institute of professional studies( IPS) Legon. I joined GOPDC in January 2012. I am very accommodating and patient. Hmmmm, my hobby, I love to watch movies and listen to music at my leisure time.

**Rose Laudina Araba Assin** completed her national service in August 2011 with GOPDC Ltd and was given permanent employment after successful interview on the 4<sup>th</sup> of September 2011 as an accounts officer. Rose had her basic and secondary education at Suhum Presby Model JSS and Suhum Secondary Technical School respectively. She holds Higher National Diploma (HND) in Accountancy from Cape Coast Polytechnic. The beautiful, gentle, courteous, outgoing and hardworking young lady likes watching movies, singing and listening to music and reading and by the way if you care to know she is happily single and still searching.



**Roger Tii Yenbon** is my name. I come from Bolgatanga in the Upper East Region of Ghana. I am a man of 45 years of age. I am married with three children. I obtained my GCE 'O' Level Certificate in the year 1993 at Navrongo Secondary School in the Upper East Region of Ghana. I started work with GOPDC Ltd as a Security Guard and later transferred to the Technical Department. Through hard work and dedication I have become a tractor operator. Listening to music, watching movies and football are my hobbies.

I am a Ghanaian of 36 years of age and my name is **Acquah Richard**. I was born on the 25<sup>th</sup> of September, 1976. I am a product of NVTI. I hold a certificate in Electrical/Sterilization grade 1 & 2. Due to the experience of mind, GOPDC employed at the Technical Services Department Mill Production as a Sterilizer Operator. I was employed at the Technical Services Department on the 15<sup>th</sup> February 2005-2012. I came here with my wife and one son. With dedication of work GOPDC Management promoted me to Junior Staff between the 1<sup>st</sup> of July 2011/2012.



**Ernest Peprah** joined the Technical Services Department of GOPDC Ltd on the 9<sup>th</sup> of January, 2005 as a Boiler Attendant. He holds Natioal Vocational Training Institute Certificate (2) from Kokomlemle Toyota Workshop at Accra in Automobile Engineering. He is stll single and searching.

I am **Abdulai Zulkarnain**. I was born in Kpando and completed middle school. I further moved to Togo where I completed my Secondary Education. I was trained in Micro - Printing Press and worked with the company from 1994-1998. I joined GOPDC Ltd in 1998 as a steward at the Guest House. In 2005, I was employed and trained as an Assistant Boiler Operator up to date.





## HUMAN RESOURCE



**Eric Goulongana**, Assistant Accounts manager, is a graduate of DeMontfort University in Accounting and Finance. He has worked in various sectors including the agro-food and service industries as well as real estate. Before, joining GOPDC, he was working in the accounting department in Siat Gabon, at the offices in Libreville.

**ISAAC ANOFF-AFIAKWA** assumed the position of Senior Internal Auditor (Head of Audit) of GOPDC in October 2012. Isaac brings with him to GOPDC four years of professional practice experience from KPMG, a firm of Chartered Accountants. Isaac fulfilled his role as an associate auditor and an in-charge at KPMG by implementing systems and procedures, sound internal and financial control practices that captured meaningful data and enhanced decision-making processes for clients. Isaac has special interests in fraud investigation and risk management.



Hello, I am **Evans Tenkorang Blackie**, the Utilities Engineer at the Mill. I joined GOPDC on the 17<sup>th</sup> of January, 2011. I had my primary, JHS and SHS education at Achimota School and continued to the Kwame Nkrumah University of Science and Technology where I obtained a bachelor's degree in Mechanical Engineering (Thermofluids and Energy Systems option). I am married to Agnes Ohenewah Tenkorang Blackie. During my leisure time I enjoy playing table tennis, swimming and watching soccer.

I am **Owusu-Sarpong Kwame Snr**. I'm a 25 year old gentleman who completed my senior high education at Achimota School in 2006 and graduated from the University of Ghana, Legon in 2010 with a bachelor of science (BSc) in Agriculture specifically in the field of industrial and plantation crops. At my leisure, I love to watch football and play video games. I have been working at the Refinery/Fractionation Plant since August 2011.



## Promotion



**Alexander Gyimah Poakwa**

Grade: Supervisor

Department/Section: Finance



**Anthony Agyekum**

Grade: Supervisor

Department/Section: Services



**Patrick Quartey**

Grade: Supervisor

Department/Section: Services



**Ebenezer Darko**

Grade: Supervisor

Department/Section: Finance



**Francis Kwabla, Finance**

Grade: Supervisor

Department/Section: Finance



**Justice Tenkorang**

Grade: Supervisor

Department/Section: Agriculture



**Joseph Appiah**

Grade: Supervisor

Department/Section: Services



## Wedding Bells



Head of Survey Section, Mr. Seth Kotey Tawiah Amon and Miss Naa Adjorkor Adjei a trained Teacher by profession had their Wedding on 27<sup>th</sup> August 2011 at Osu Children's Home. The ceremony was attended by the members of the Senior Staff of GOPDC.

On the 28<sup>th</sup> of January, 2012, Mr. Evans Blackie Tenkorang of the Utilities section got married to Miss Agnes Ohenewah Ghansah, an I.T. student of the University of Education, Winneba (Kumasi Campus). The ceremony was held at the St. Luke Methodist Cathedral, Akim Oda and was well attended by staff of GOPDC.





## COMMUNITY AND SOCIAL RESPONSIBILITY

### The new Social Responsibility Policy



Since its inception in the 1975s, GOPDC has been contributing to the socio-economic development of its area of operation in community development, education, health, sanitation, energy and protection of the environment.

At a meeting with traditional leaders of the Company's catchment communities on December 11, 2012 the Management presented GOPDC's new Social Responsibility Policy (SRP) to the chiefs. The new SRP dated November 2012 takes retrospective effect from the 2010 Financial Year and replaces the one dated January 2010. The new Social Responsibility Policy can be downloaded from the GOPDC website [www.gopdc-ltd.com](http://www.gopdc-ltd.com).

### GOPDC assists communities with over GH¢188,000

The Ghana Oil Palm Development Company Limited (GOPDC) Kwae E/R has released a total amount of GH¢ 188,726 to the communities on whose lands it is operating to assist them in the development of their respective communities.

This benevolent act is in line with GOPDC's Social Responsibility Policy.

The beneficiary Communities are Kwae, Anweam, Asuom, Minta and Maaman in the Kwae Project and for the Okumaning Project, Okumaning, Kusi, and Takrowase communities were the beneficiaries.

According to the Community Relations Officer of GOPDC, Alhaji Bashir Manu, each year the Company allocates a percentage of its turnover and net profit to the various traditional councils and communities within its catchment area to cater for their socio-economic development.

Okumaning intends using its share of the amount to complete a clinic already under construction and to provide health facilities with a borehole. Asuom, Minta and Maaman will be utilizing their share for the building of palaces for the chiefs. The Minta palace will be sited at Okaikrom while that of Maaman will be at Atobriso

Alhaji Manu said the amount a community received depended on the total land it had released for the Company's plantation projects.

The Company also offers assistance to the Kwaebibirem District Assembly, the Okyeman, Environmental Foundation and the Akyem Abuakwa Traditional Council.

Next are the pictures showing payment to some community leaders.

## COMMUNITY AND SOCIAL RESPONSIBILITY



## New projects in the communities

### Okumaning



Okumaning is one of the communities in the Kwaebibirem District that has released a bigger portion of its land to GOPDC for its oil palm plantation. In view of this, GOPDC has not relented in its efforts in ensuring that developmental projects are carried out smoothly to uplift the wellbeing of the community.

One of such developmental projects that GOPDC has supported the people of Okumaning in undertaking is a clinic located at the periphery of the town for easy accessibility. It is hoped that this noble gesture will help improve the health of the people of Okumaning since they would no longer have to travel long distances to access health care.

Other projects recently undertaken by the Chief of Okumaning, Osabarima Adu Gyamfi III with support from GOPDC include a hand dug well, a place of convenience and extension of electricity to the clinic and its surroundings.



It is hoped that GOPDC and the people of Okumaning will continue to enjoy a cordial relationship for the betterment of the town and entire nation as whole.



### Anweam



GOPDC assisted the community of Anweam to put up a school building realizing the importance of education to the development of the community and the nation at large. Other projects undertaken by the community with support from GOPDC include the construction of a 12-seater KVIP toilet.

### Minta

Through a donation made to Minta by GOPDC, the community can now boast of a magnificent palace befitting modern royalty.





## New projects in the communities

### Kwae



The people of Kwae can now heave a sigh of relief since the heap of rubbish which was an eyesore and a threat to the health of the community has been cleared with assistance of GOPDC.

We are hoping to capture in our next edition of GOPDC News the building of a new school and rehabilitation of the old

schools at Kwae with the continued support received from GOPDC in order to raise the level of education in the town.

### Kwae-Otumi Road

Although maintenance of the Kwae to Otumi road is the responsibility of government, GOPDC has taken it upon itself to regularly maintain the road to help curb any accident and prevent the rapid deterioration of the road.



### GOPDC assists Kade Police

RECEIVED  
11 SEP 2012  
KWAE  
MANAGING DIRECTOR

In case of reply the  
Number and date of this  
Letter should be quoted

My Ref. No. KD/DHQ11/SF.1/VOL.10/68

DISTRICT HEADQUARTERS  
GHANA POLICE SERVICE  
AKIM-KADE.  
7<sup>TH</sup> SEPTEMBER, 2012

**LETTER OF APPRECIATION**

On behalf of the Police Administration and the entire staff of the Kade District Police Command, I wish to express my profound gratitude to the Ghana Oil Palm Development Company Limited (GOPDC) for the renovation works on the Police Cells at Kade Charge Office.

The District is very grateful for your assistance. May God richly bless the Management and entire staff and replenish all that the company has expended.

Thanks to you all.

DEPUTY SUPERINTENDENT/KADE  
GHANA POLICE SERVICE  
(MR. STEPHEN DELAPORTE)

THE DIRECTOR/GENERAL  
GHANA OIL PALM DEVELOPMENT LTD (GOPDC)  
KWEA ESTATE

CC: C/SUPOL/ODIV

Following an appeal by the Kade District Police Command, GOPDC supported the complete renovation of the Police Cells at the Kade Charge Office. The renovation works, fully paid for by GOPDC, was awarded to Kwamart Enterprise who won the bid for this contract.

Alhaj Bashir Manu, the Community Relations Officer of GOPDC said the company considers its assistance to the Police Service as a social responsibility in the fight against crime in the district. He added that the company has not relented in its efforts in supporting communities and institutions within the Kwaebibirem District in the area of health, education and environment.

## New projects in the communities

### Support for quality education

GOPDC, realizing that education is a catalyst for community development, awards scholarships to bright but needy students in its operation areas.

It is also assisting the University College of Agriculture and Environmental Studies (UCAES) established by the Okyeman Council at Bunso in the Eastern Region.

The company has already released oil palm seedlings to the college for planting. Though GOPDC was willing to place its state-of-art refinery laboratory at the disposal of the college for research work, a recent visit by the Rector of UCAES revealed that the GOPDC laboratory would only be partly adequate for UCAES' use. Management of GOPDC and UCAES are therefore exploring measures by which UCAES would complete its own laboratory with support from GOPDC. Meanwhile, GOPDC indicated its doors remained open to receive students of the University on industrial attachment.



These elegant looking young ones are our future leaders and hence GOPDC is not taking chances at all knowing that the Eastern Region is the region with the highest prevalent rate of HIV & AIDS and Kwaebibirem is the third highest to Agomenya.

In view of this, on the 28<sup>th</sup> of November, 2011, an HIV & AIDS workshop was organized by the Community Relations Unit of GOPDC for about 50 JHS students. The aim of the workshop was to remind them about the deadly disease and to entreat them to abstain from sex and any other act that can cause HIV & AIDS and also to assure them of GOPDC's continued support to the school.

### Donation to Savelugu-Nanton District



called upon.

Baba Musah, the project coordinator for the *Children to School Project Ghana*, on behalf of the management of Wienco (Gh) Ltd and Integrated Tamale Fruit Company Ltd, sent a letter expressing their appreciation and gratitude for the donation.

Ghana Oil Palm Development Company (GOPDC), in its unlimited desire to help develop the country's human resource base through education, continues to donate palm oil towards the school feeding programme in the Savelugu/Nanton district of the Northern Region of Ghana. The Community Relations Officer, Alhaj Manu Bashir, was hopeful that the donation would go a long way to improve the school feeding programme and also impact positively on the performance of the students in this district. He further pledged the company's preparedness to offer other assistance if



## Our working environment and social news



### Werner Pirijns leaves GOPDC ...

Departure no matter the intention and who is involved is always painful. So was the state of the over forty Management, Senior and Junior staff members who had gathered at the management club house on the 14<sup>th</sup> of March, 2012 to bid a final farewell to the optimistic and enthusiastic Managing Director, Mr. Werner Pirijns and his wife.

Though solemn a party, at around 7:00pm invited guests started trooping in elegantly dressed to take their seats for the evenings programme to begin.

The Deputy Managing Director, Mr. Lawrence Atsrim formally welcomed all quest and stated the obvious purpose of gathering which was to bid the Managing Director kudos for a good job done in building GOPDC and the country at large.



In his statement, DMD reduced the anxiety level of his quest by saying that though very untimely and too sudden for the managing director to leave the company, it is not worrying knowing that Mr. Werner Pirijns has chosen a field and a place of interest where his efficient managerial skill and commitment to work will be celebrated. With these few words said everyone applauded to the news that Mr. Werner Pirijns will be working in Nigeria which is just a stone throw away from Ghana implying that Mr. Werner Pirijns is still with us.



Amidst the drinking and eating the climax of the evening came when the outgoing managing director had to address his quest. Full of smiles and glowing exceptionally due to the presence of his wife, Mr. Werner Pirijns appreciated the presence of the saddened quest for taking time of their busy schedule to dine with him and his wife on their departure. He was thankful to all for their support, criticism and cohesion but in all according to him, the quite bumpy road has been smoothened considering the state of GOPDC at the time he came. He was therefore confident leaving knowing that the company is in a good shape now.

Mr. Asante, representing the unions expressed a heartfelt gratitude to Mr. Werner Pirijns for executing with diligence his job as the managing director of GOPDC. He stated that one thing he admired of him most is his door that was opened to all but he was quick to add that the open door did not guarantee one's request being accepted because for him, the first response to every request is 'NO' until one has proven beyond every reasonable doubt that the claim is necessary.



Tradition can never be broken and the richness in culture of the Ghanaian will always be at display at such important functions. The affable Human Resource Manager displaced the richness of our culture by presenting to the outgoing Managing Director a very rich colorful Kente Cloth and Ahenema. His adorable wife was not left out as she was also presented with beads and Kente.



## Our working environment and social news



Drawing down curtains on the evening's ceremony, the CFO, Mr. Felix Nwabuko was granted the audience to thank all and sundry for their cooperation in making this farewell part a success.



**Mr. Emmanuel Kwasi Wiafe**, Okumaning Estate Manager, was awarded his Master of Philosophy (MPhil) degree in Environmental Science by the University of Ghana, Legon at the University's Congregation held on March 12, 2011.

**The Humble Women's Association** of Kwae Estate on a routine clean-up exercise on the Estate.





## GOPDC HEALTH WALK 2012

The health of the workforce is a very important aspect that determines the productivity and development of any company. The ill-health of the workers will always yield to a low level of production, which is usually even not of high quality, leading finally to the stunted growth of the company. Due to this important fact, a health walk was organized by the Community Relations Unit of the company on the 1<sup>st</sup> July 2012 to help in the enhancement of the health of its workers. The workers from GOPDC were also from all the various departments. The route for the walk was from the Agric block through the Airstrip area to Asuom-Mill Road then back to the Nucleus Estate through the Mill-Market road.



## President Herman Van Rompuy visit to Ghana



### PRESIDENT OF THE EUROPEAN COUNCIL HIS EXCELLENCY MR. HERMAN VAN ROMPUY'S PRIVATE VISIT TO GHANA ...

26<sup>th</sup> July - 8<sup>th</sup> August, 2012

#### THE PHOTO STORY ...

*At the GOPDC School on August 28, 2012*



His visit was met with anticipation as the children were informed two weeks in advance. For that reason pupil attendance on the day was as encouraging as any ordinary school day though children had vacated couple of days before.

In his speech at the morning assembly, he said that he was glad to have his first interaction with Ghanaian school children and would like to share few words with children even though he had not prepared any message officially. Pertaining to his visit to the country, the GOPDC School has given him a great opportunity to meet

Ghanaian children in their colourful uniforms at school. He said his meeting with the children at the school formed an integral part of their tour.

About the school structure and compound, he said he was impressed with the serenity and therefore encouraged pupils to take advantage of such a good learning environment and study hard. Moreover the day has really reminded him of his early school days - beginning 1952 at Etterbeek, Belgium. He then requested to be with children in their various classrooms for a closer interaction.



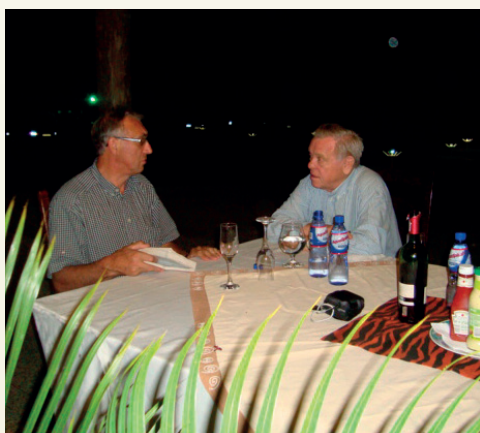


## President Herman Van Rompuy visit to Ghana

At the GOPDC Palm Oil Mill and Refinery .....



... at the barbeque on 28<sup>th</sup> July, 2012 at the GOPDC Management Staff Club House ...





## President Herman Van Rompuy visit to Ghana

... at the **GOPDC Clinic** ...





## President Herman Van Rompuy visit to Ghana

...at GOPDC Kwae Plantation ...



... at Okumaning Ahenfie (Okumaning Palace) ...





## President Herman Van Rompuy visit to Ghana

... at Ofori Panin Fie (Okyenhene's Palace) at Kyebi ...



The president of the European Council H.E. Mr. Herman Van Rompuy has observed that Ghana has great potential which is needed to tap for the development of the country and improvement of the quality of the Ghanaian. The European Union will therefore continue to assist in the tapping of potential as a development partner.

H.E. Van Rompuy made these remarks when he and the Chairman of the Siat Group (the parent company of GOPDC), Mr Pierre Vandebecck paid a courtesy call on the Okyenhene, Osagyefuo Amoatia Ofori Panin at Ofori Panin Fie, Kyebi.

He appealed to Ghanaians to ensure that the December 2012 general elections were held in an atmosphere of peace without any form of tension or violence and that it would be free and fair and the result would be accepted by all.

The European Council President expressed sadness at the death of Ghana's President J.E.A. Mills but congratulated President John Mahama on assumption of the office and hoped he would help Ghanaians to realize their dream of prosperous country.



Osagyefuo Amoatia Ofori Panin expressed delight of the visit of the two dignitaries and said the EU has been very supportive of Ghana and Africa and hoped the assistance would be increased. However, the Okyenhene observed that Ghana needed to stand on its own feet without carrying "begging bowl" around the world seeking assistance.



The Okyenhene said concerned about increased production of food and the improvement of the environment, Okyenhene decided to establish the University College of Agriculture and Environmental Science. He said the university was founded on two principal pillars - agriculture and environment. Osagyefuo observed that poor traditional agrarian practices have led to diminished food production and that there was also the need to address the grave ecological threats facing Ghana and the West African subregion. The immediate mandate of the college was to teach and research ways to reform the agrarian culture, increase food production and protect the ecology.

## President Herman Van Rompuy visit to Ghana



The Okyenhene said it was the expectation of the founders of the university college that it would become a 21<sup>st</sup> century institution at the centre of the current debate on hunger, food production and earth sustainability.

He said lecturers and staff have been recruited and that by December 2012, the college would have enrolled about 100 students.

The Okyenhene called on the government to deepen the decentralization programme to hasten the country's development.

Mr. Pierre Vandebecq praised the Okyenhene for establishing the university college and offering GOPDC membership of the College Board. Mr. Vandebecq promised that GOPDC would offer whatever was within its means to ensure the rapid growth and development of the college. Mr. Vandebecq said GOPDC was helping improve the Ghanaian economy in general and Okyeman in particular by the development programmes, including education and health, undertaken by GOPDC in its catchment communities.

Among those accompanying the two visitors was Mr. Philippe Hoogstoel, the new Managing Director of GOPDC.

Report by Community Relations Officer, GOPDC

**... more photos from the Okyenhene's Palace ...**





## President Herman Van Rompuy visit to Ghana



... at Manhyia (Asantehene's) Palace, Kumasi ...





## President Herman Van Rompuy visit to Ghana



*... and the drivers - Alex, Daniel and Mohammed - who did the rounds with the delegation...*



## REPORT ON HEALTH AND SANITATION EDUCATION ORGANIZED FOR GOPDC SCHOOL

11<sup>th</sup> and 12<sup>th</sup> of April 2012 were set aside to train pupils of GOPDC School on:

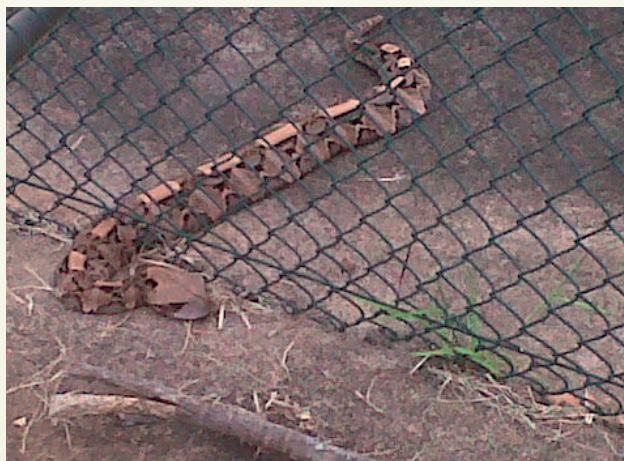
1. The alarming rate of poor sanitation at GOPDC.
2. Causes of the poor environmental condition in the Estate.
3. Health implications of the poor sanitation - outbreak of Cholera, diarrhea, malaria and other environmentally-related diseases.
4. Measures to remedy the situation:-
  - Proper disposal of refuse.
  - Ensuring that rubbish is emptied into the rubbish containers available.
  - Polythene bags and sachets and other empty materials should not be dropped on the compound.
  - Avoid throwing solid waste into gutters to allow the free flow of liquid waste.
  - Weedy environments within one's housing area should be weeded to avoid breeding of mosquitoes and harmful animals like snakes.
  - Places of convenience should be kept clean.
  - Backyard yard garden should be kept clean.

Pupils were also educated on the need for them to practice personal hygiene to avoid communicable diseases. They were asked to:

- Wash their hands regularly and taught the correct way of washing of hands.
- Keep short and clean nails every time.
- Use carbolic soap, ash, and plenty of water to wash their hands.
- Eat hot food.
- Drink clean water.

In all, two hundred (200) pupils from the Upper Primary and Junior High School of GOPDC participated in the training programme which was facilitated by Mr. Bashir Manu, the Community Relations Officer of GOPDC.

**.... Then in the morning of 18<sup>th</sup> September 2012, we received this uninvited “tennis player” at the tennis court with neither racket nor tennis ball ...**



**... but how does a tennis player ever get trapped in the wire netting of the court?**



## GOING DOWN MEMORY LANE

Can you identify the people in these photographs and the occasions?





## EDITOR'S PICK



In this maiden edition of the Editor's Pick, we are pleased to feature

### Food Safety and Hygiene

Food quality control is necessary to ensure that food aid supplies are safe, of good quality and available in adequate amounts, in time, at affordable prices to ensure an acceptable nutritional and health status for all population groups.

Food quality control includes all activities carried out to ensure the quality and safety of the food at all stages of the **food supply chain** from primary production or purchase, through processing and storage, to distribution and consumption.

Making food safe is an effort, involving the suppliers, the production plant or factory, and all of us to protect the beneficiary's health. The main risks are a contamination by **micro-organisms, toxins, foreign matters**, chemical contaminants, and excess of **moisture content**, a degradation of the **nutritional value**, or a **pest infestation**.

Most of these risks can be **easily prevented** or **mitigated** by a better knowledge of the risk factors for each commodity, by safe handling of food, by a careful inspection and possibly analysis, in short by a better management of food commodities.

By WFP

## NOTES

.....

● ● ● ● ● ● ● ● ● ● ● ● ●



## NOTES

.....

